

Summer Vacation Care

**Monday 22nd
December to
Friday 30th January**

**Bookings open Wednesday 26th November and
close Tuesday 16th December.**

Early bird rates end Tuesday 9th December

Summer Vacation Care

Mon 22nd Dec

Early Bird: \$72 Regular: \$79

**Christmas
Workshop**

Join us for a day of Christmas baking, games and challenges! Come and get into the festive spirit!



Tue 23rd Dec

Early Bird: \$72 Regular: \$79

**Movie and
PJ's day**

It's a chill day of self care, pampering, wearing your fave PJ's, and watching a movie together!



**Wear your PJ's, bring a pillow and
your fave cuddly toy!**

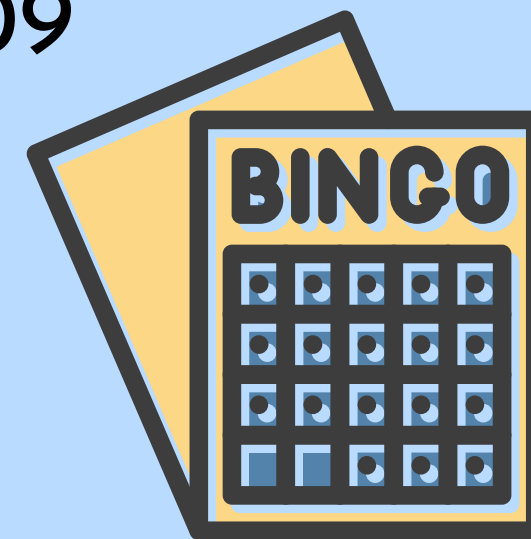
NOOSH is closed from
Wednesday 24th December
to Sunday 11th January

Mon 12th Jan

Bingo and
Lunch (Exc).

Early Bird: \$102 Regular: \$109

Let's head to Pennant Hills Bowling Club for some bingo and some lunch of chicken nugggets and chips!



Pennant Hills **Please be at NOOSH by 8:45am for a 9:00am departure**

Lunch is provided



Tue 13th Jan

Laser Tag and
Nerf Gun Day

Early Bird: \$72 Regular: \$79

Get ready for battle! Plan your strategy and take on the challenge of nerf and laser games with your mates



Wed 14th Jan

Going to City
Excursion

Early Bird: \$99 Regular: \$106

We're going on a historic tour of Sydney and having some water play at Tumbalong Park



Sydney CBD **Please be at NOOSH by 8:30am for a 8:45am departure**

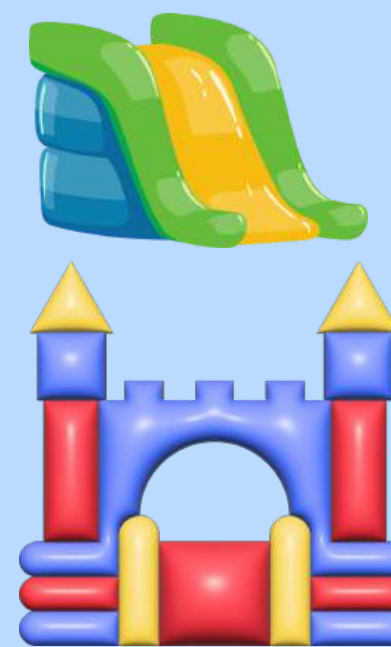


Thurs 15th Jan

Inflatables and
Games
Incursion

Early Bird: \$85 Regular: \$92

There's an inflatable obstacle course coming to NOOSH and some cool giant games happening!



Fri 16th Jan

Tie Dye Day
(In Centre)

Early Bird: \$76 Regular: \$83

Tap into your creativity and make some cool socks and tote bags!



Mon 19th Jan
Animal and Pet
Day
(Incursion)

Early Bird: \$85 Regular: \$92
We've got some cute furry friends coming to NOOSH for a visit for us to pet!



Please alert us if your child has any allergies to animals

Tue 20th Jan
Inflatable
World
Excursion
Dural

Early Bird: \$112 Regular: \$119
You know you love it! We're heading to Inflatable World Dural for 2 hours of jumping fun!



Please be at NOOSH by 11:00am for a 11:30am departure

Wed 21st Jan
Wild Water
Day

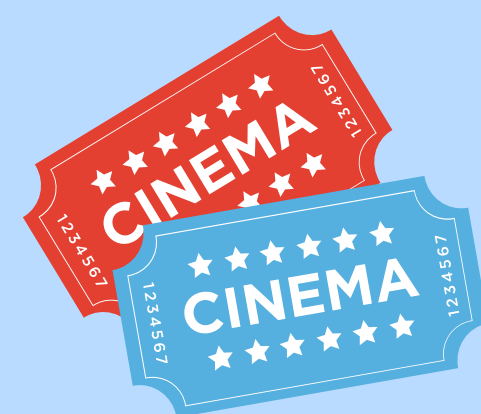
Early Bird: \$75 Regular: \$82
It's a day of water balloons, and water bombs, water guns and water play - are you ready?



Wear your swimmers and bring a towel and a change of clothes

Thurs 22nd Jan
Movie OR
Shopping Day
(Exc)

Early Bird: \$99 Regular: \$106
K-2 are going to the movies, 3-6 are going shopping! A much requested excursion!



Hornsby

Please be at NOOSH by 8:30am for a 8:45am departure

Fri 23rd Jan
Masterchef
Day

Early Bird: \$75 Regular: \$82
Come make some delicious creations taste some scrumpious food, and enjoy the good vibes!



PUBLIC
HOLIDAY

Mon 26th Jan

Tue 27th Jan
Arcade
Excursion

Sydney CBD

Early Bird: \$113 Regular: \$120

Time to take on the games with your friends! It's one of our favourites!

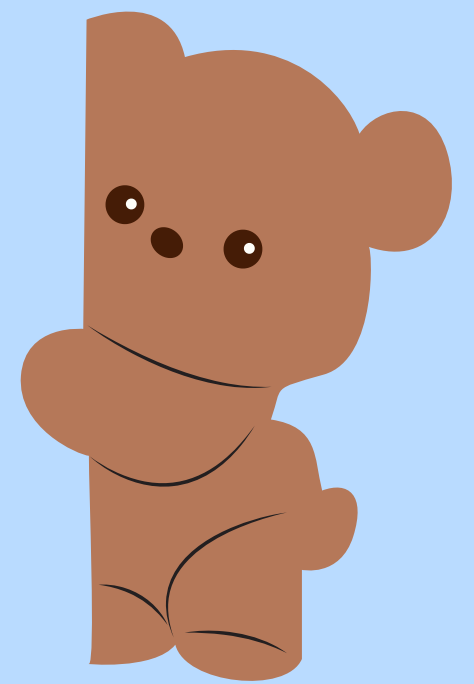


Please be at NOOSH by 8:45am for a 9:00am departure

Wed 28th Jan
Build a bear
(Incursion)

Early Bird: \$85 Regular: \$92

Make your own super cuddly toy with us! Choose your new buddy fill it with stuffing and love, then name it by filling out its own birth certificate!



Thurs 29th Jan
Ryde Aquatic
Centre (Exc)

Ryde

Early Bird: \$116 Regular: \$123

We're heading to our fave swimming pool! There's a fun water slide and we will enjoy the wave pool!



Please be at NOOSH by 8:30am for a 8:45am departure

Wear your swimmers and bring a towel and a change of clothes

Fri 30th Jan
Wheels and
Device Day

Early Bird: \$72 Regular: \$79

Hone your bike and scooter skills and cruise with your friends, and play with your devices!



Bring your bike/scooter, helmet and devices

Summer Vacation Care

Things to know

Excursion (abbreviated Exc)= the children leave the centre with the educators and travel by bus or train to the venue. Higher ratios required.

Incursion = the children stay at NOOSH and an external provider brings activities for the kids to do

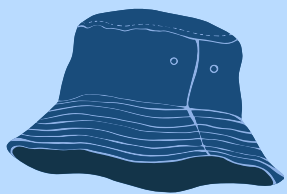
In Centre = the children stay at NOOSH and activities are run by the NOOSH staff

What should I pack for my child?

Morning Tea & Lunch



A Hat



Bottle of fresh water



Spare change of clothes



Raincoat/wet weather gear
(depending on weather)



What time does my child need to be at the Centre by?

We start running our activities at 9.00am.

For Excursions: We expect all children to arrive **by 8.30am**, ready to depart the centre at 8:45am, unless otherwise stated.

Bookings and cancellations

The cut-off date for early bird bookings is 9/12/25

The cut off for regular bookings and cancelling without charge is 16/12/25.

Families wishing to cancel **MUST** log into the portal by 16/12/25 to cancel online. Charges will be applied for cancellations after this date.

If your child is absent: please call/text the centre to notify us of your child's absence, as you cannot mark it online during Vacation Care

Ph: **0437 712 178**

Please refer to risk assessment forms online